

**R E B U I L D**  
**P O T R E R O**

  
**BRIDGE**Housing

# Potrero Block B Community Meeting

August 27, 2020

# Agenda

- **Welcome & Virtual Protocol**
- **Team Introductions**
- **Project Update**
- **Group Discussions on Design Options**



# Key Features Tutorial

# Meeting Controls



More



**Interpretation**



**Mute**



Unmute

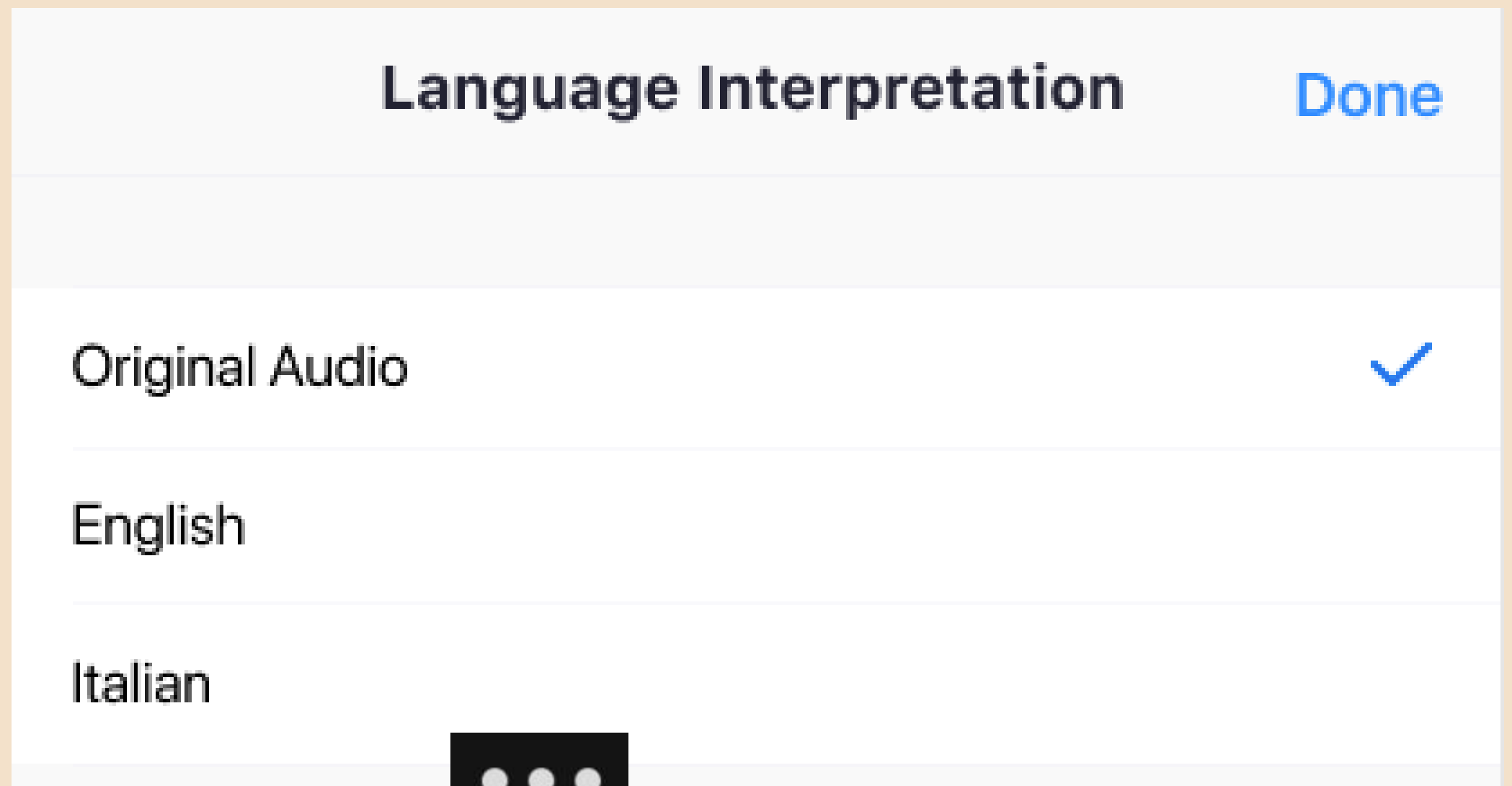



Raise Hand



Chat

# *How to select your language*

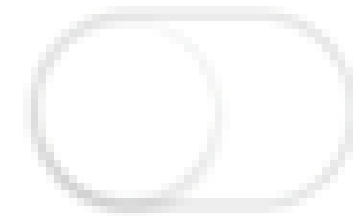


Click on the **three dots**  in the lower right hand corner that says "**More**".

Click on "**Language Interpretation**"  and select the language you would like to hear and click "**Done**".

# *How to select your language (contd.)*

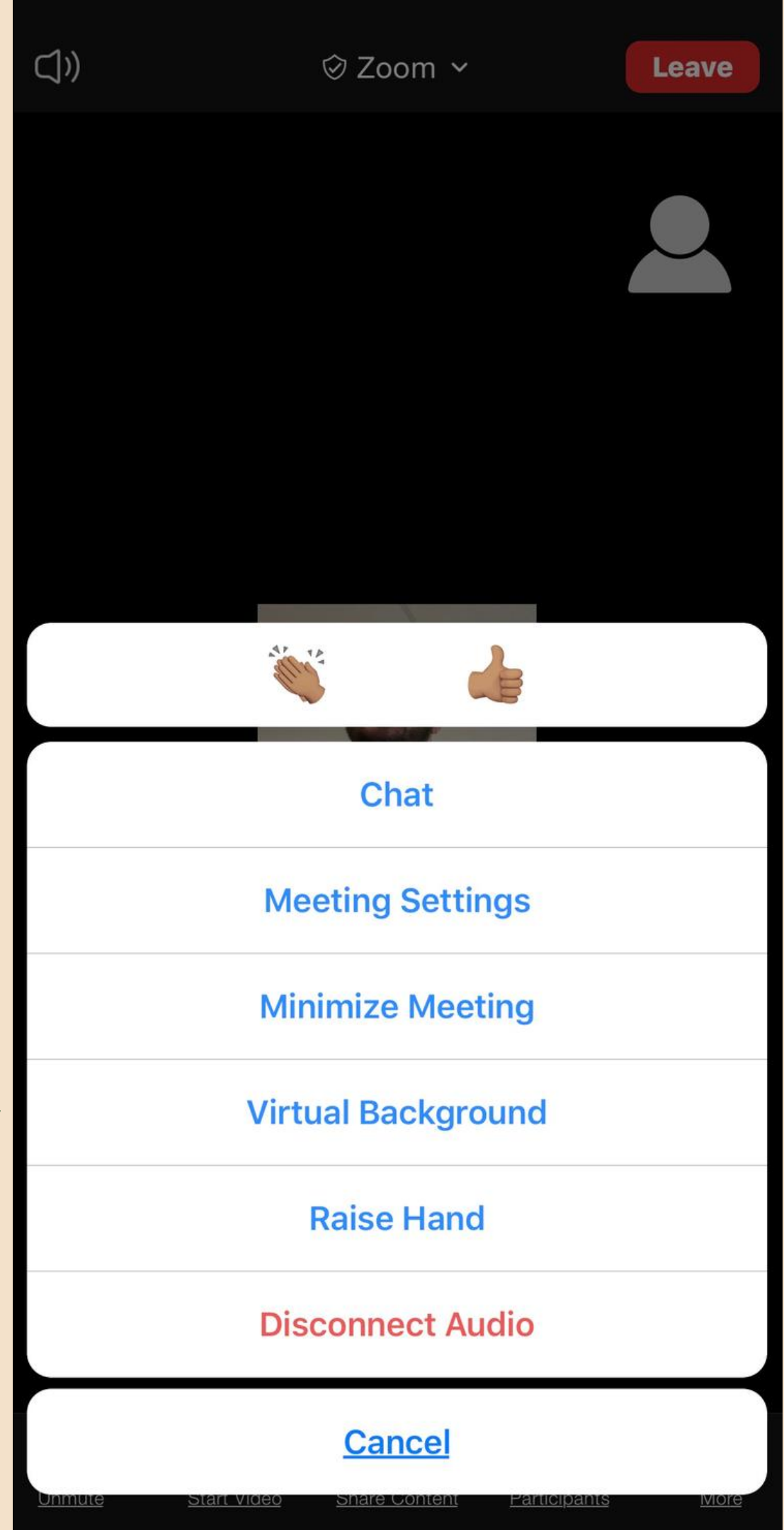
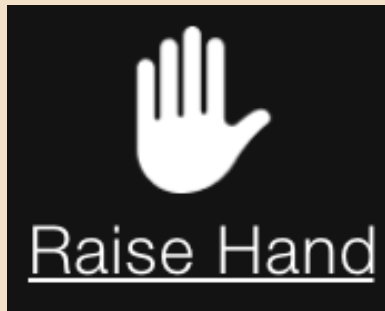
Mute Original Audio



*(Optional)* Tap the toggle to Mute Original Audio and click “Done”.

# *How to raise your hand*

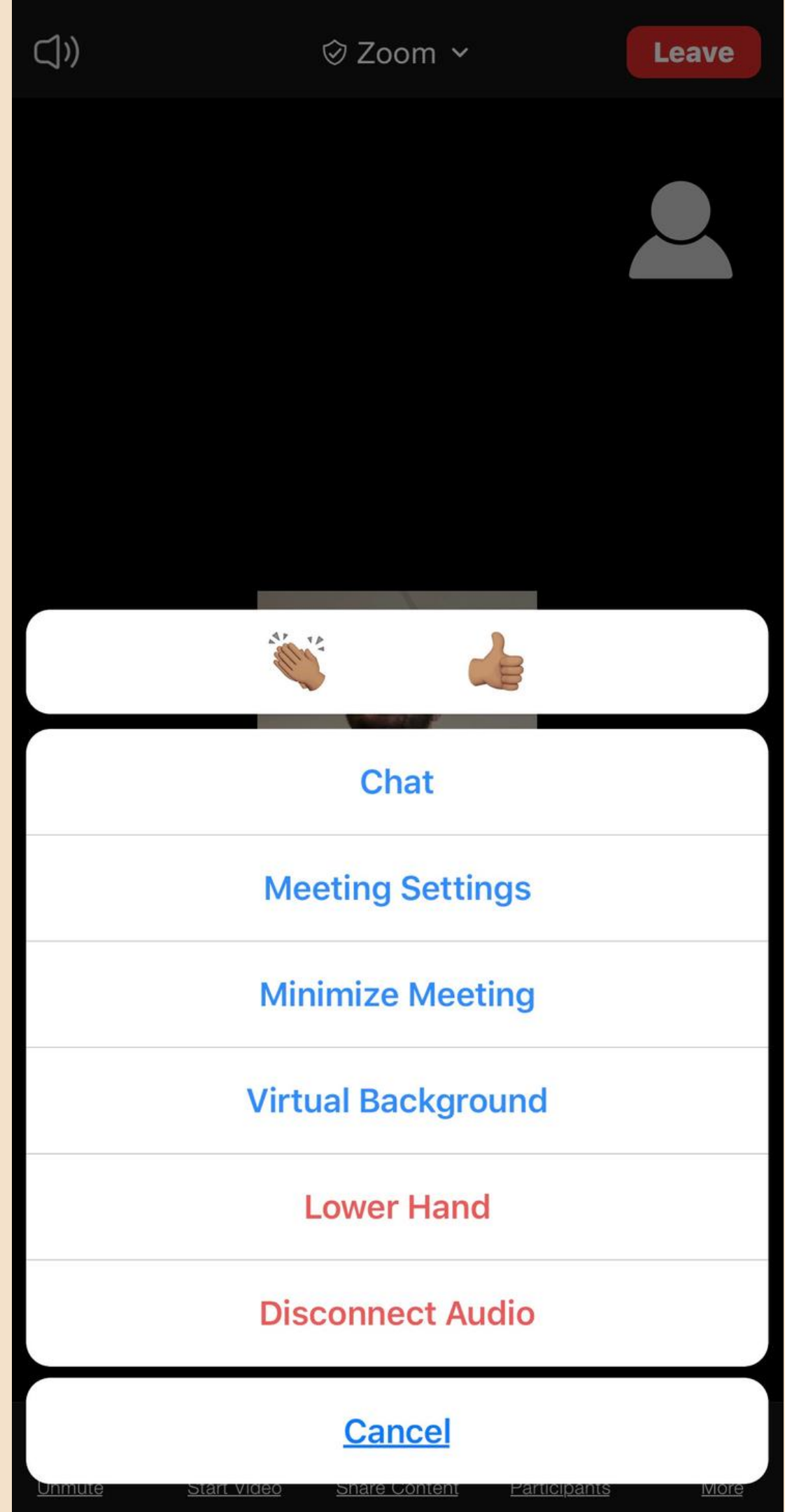
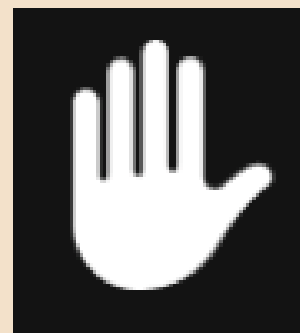
To raise your hand, click on the **three dots**  in the lower right hand corner that says **"More"**. Click on **"Raise Hand"** towards the bottom.



# *How to lower your hand*


Click on the three dots  in the lower right hand corner that says "More".

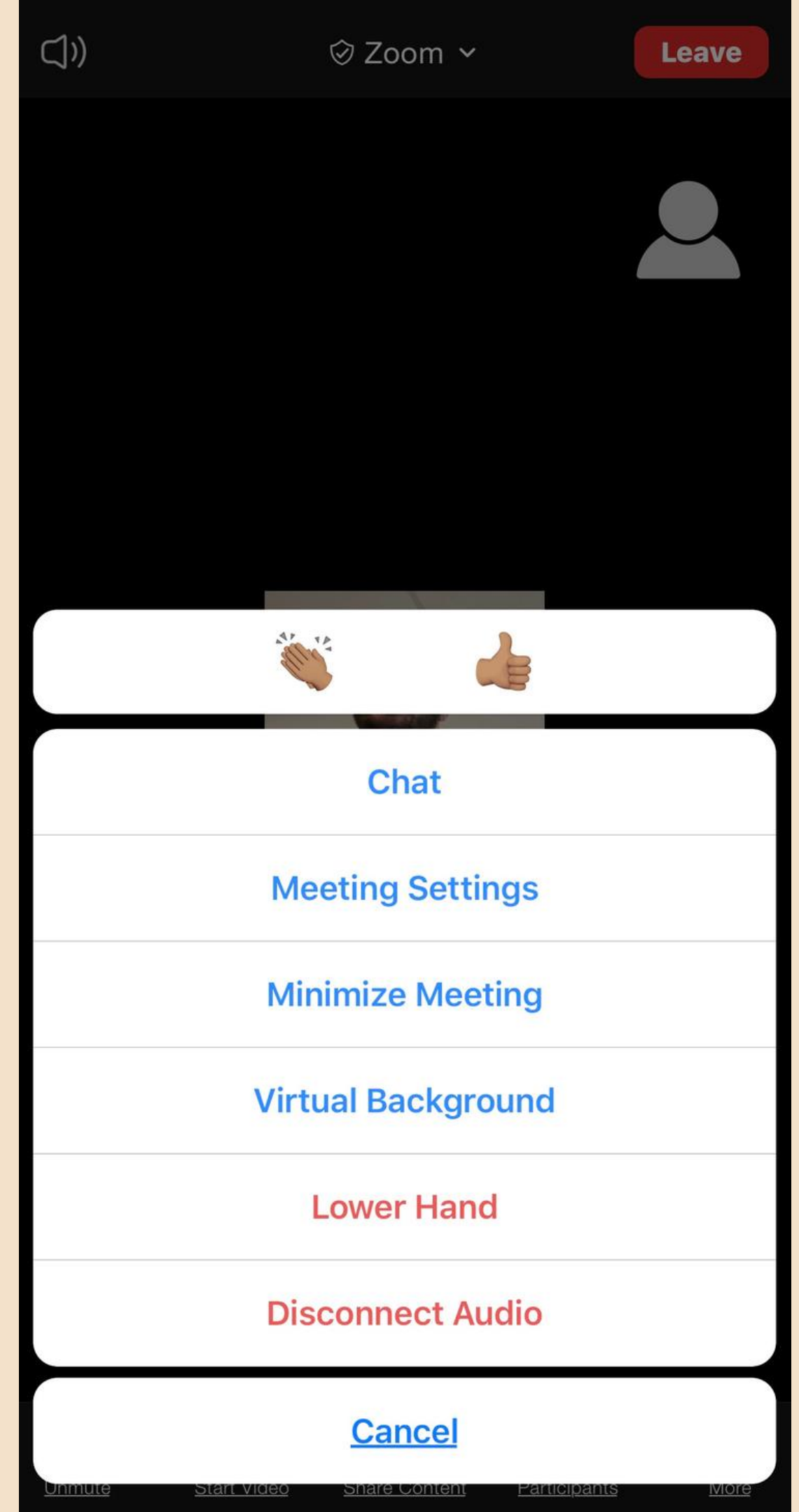
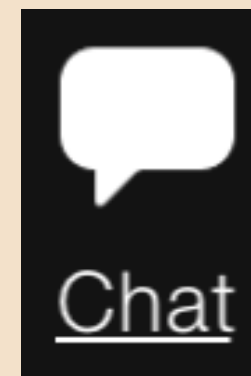
Click on "Lower Hand" towards the bottom.





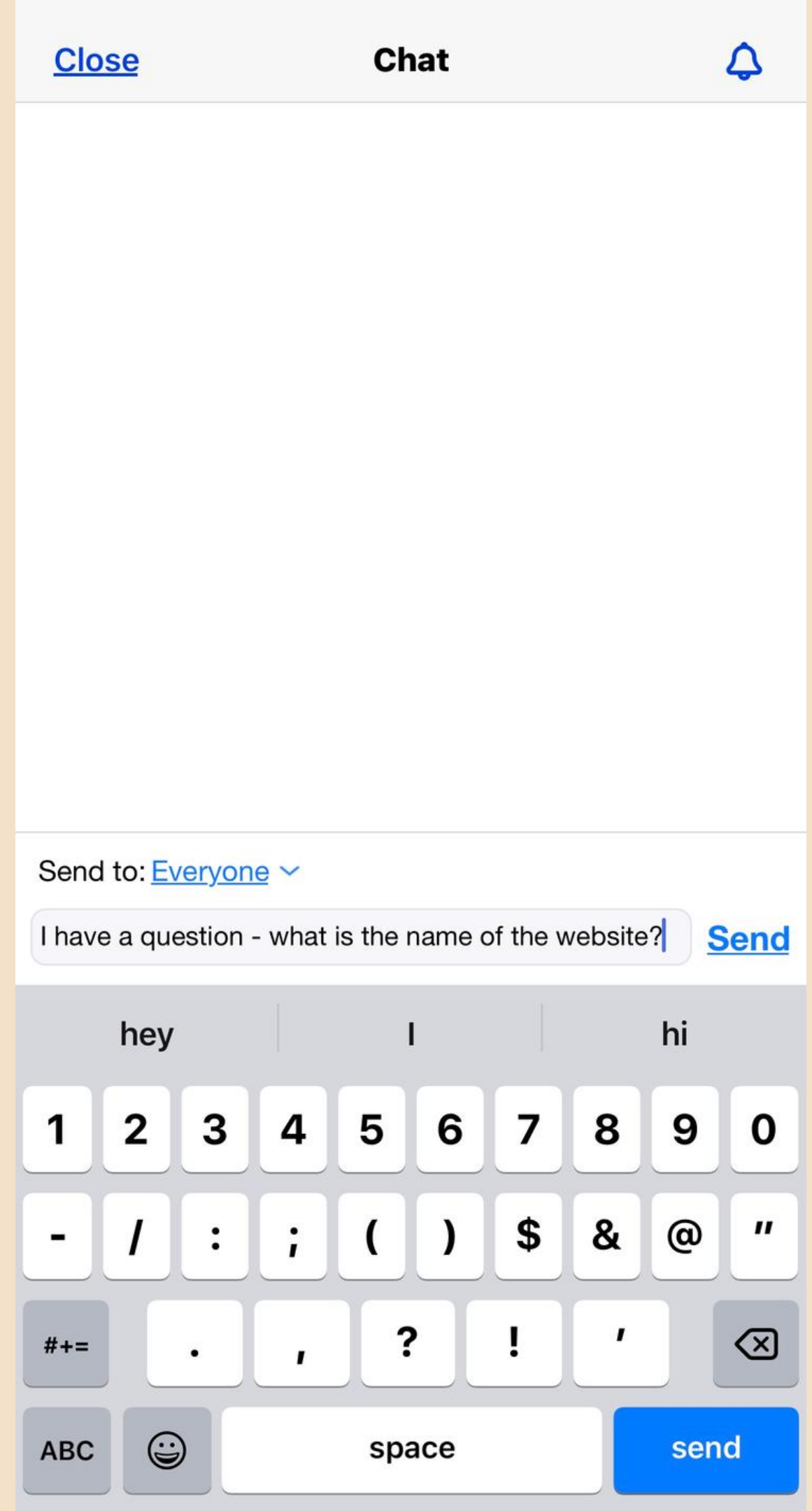
# *How to chat*

Click on the **three dots**  in the lower righthand corner that says "**More**". This will open up several options, click on "**Chat**".

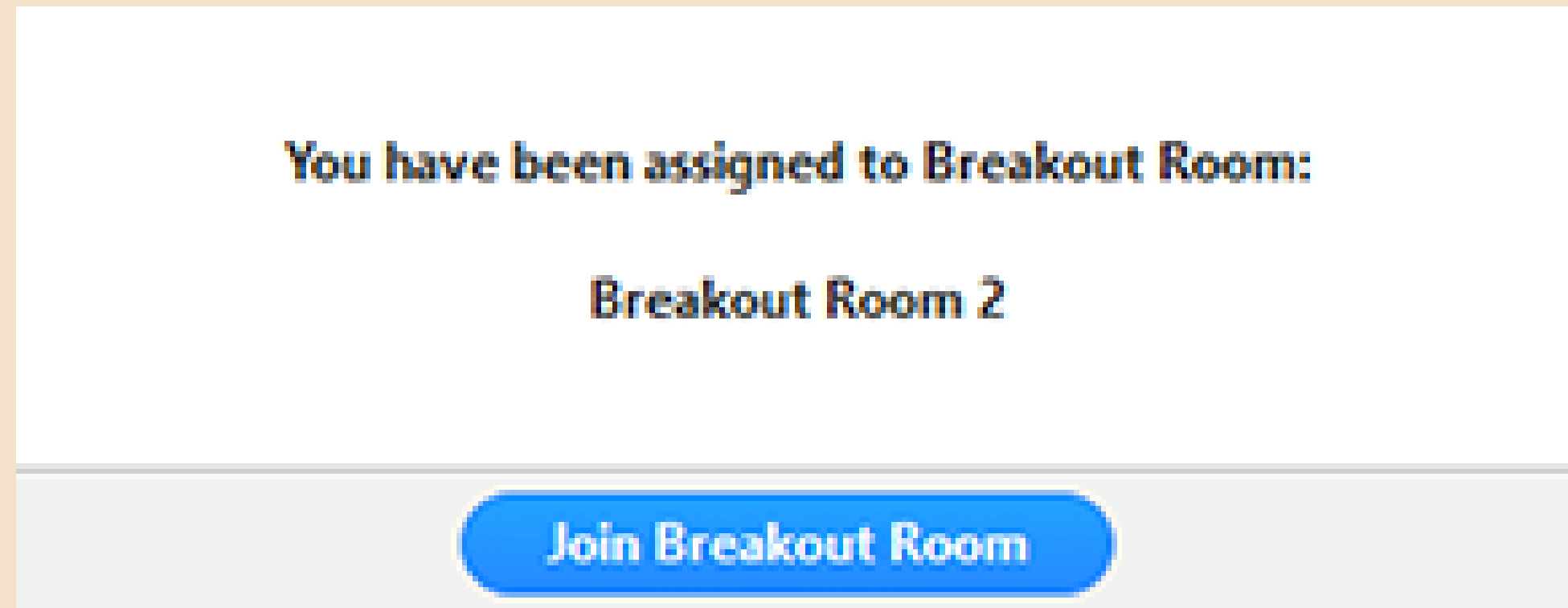


# *How to chat (contd.)*

Select if you want to send the message to “**Everyone**” or to a specific person. Type your message, and press “**Send**”.

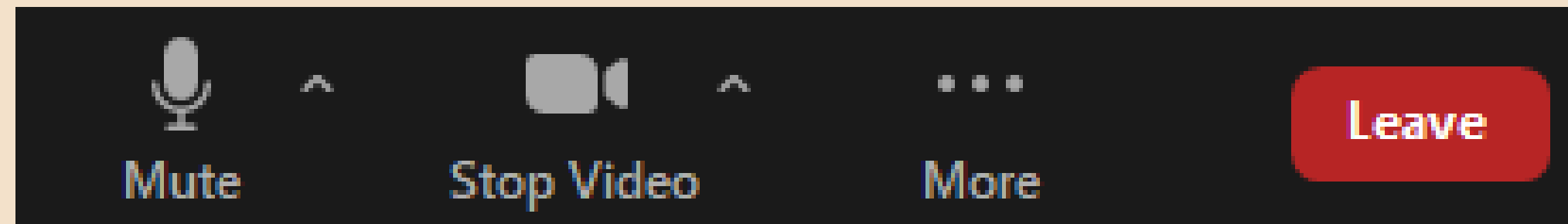


# *How to join breakout room*



Tap the "Join Breakout Room" prompt.

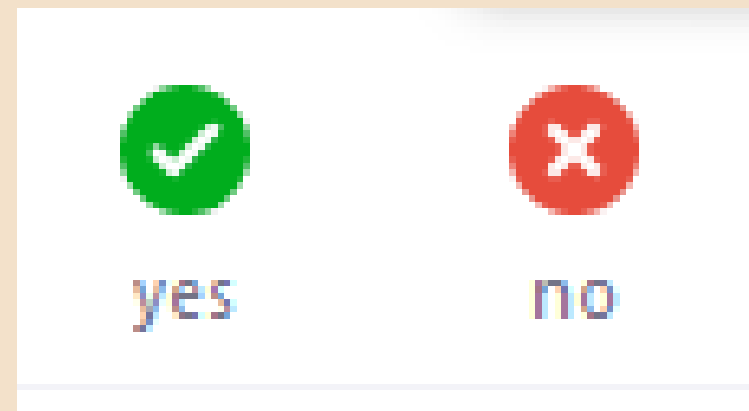
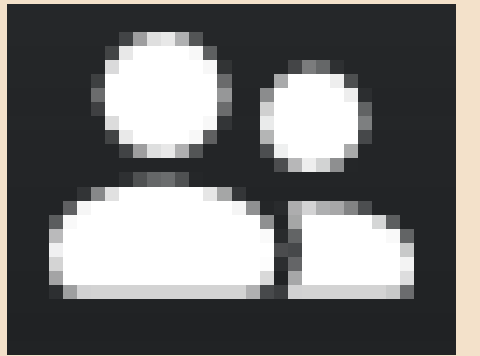
# *How to leave the meeting*



Click on the “**Leave**” button  
in the lower right hand corner.

# *How to vote*

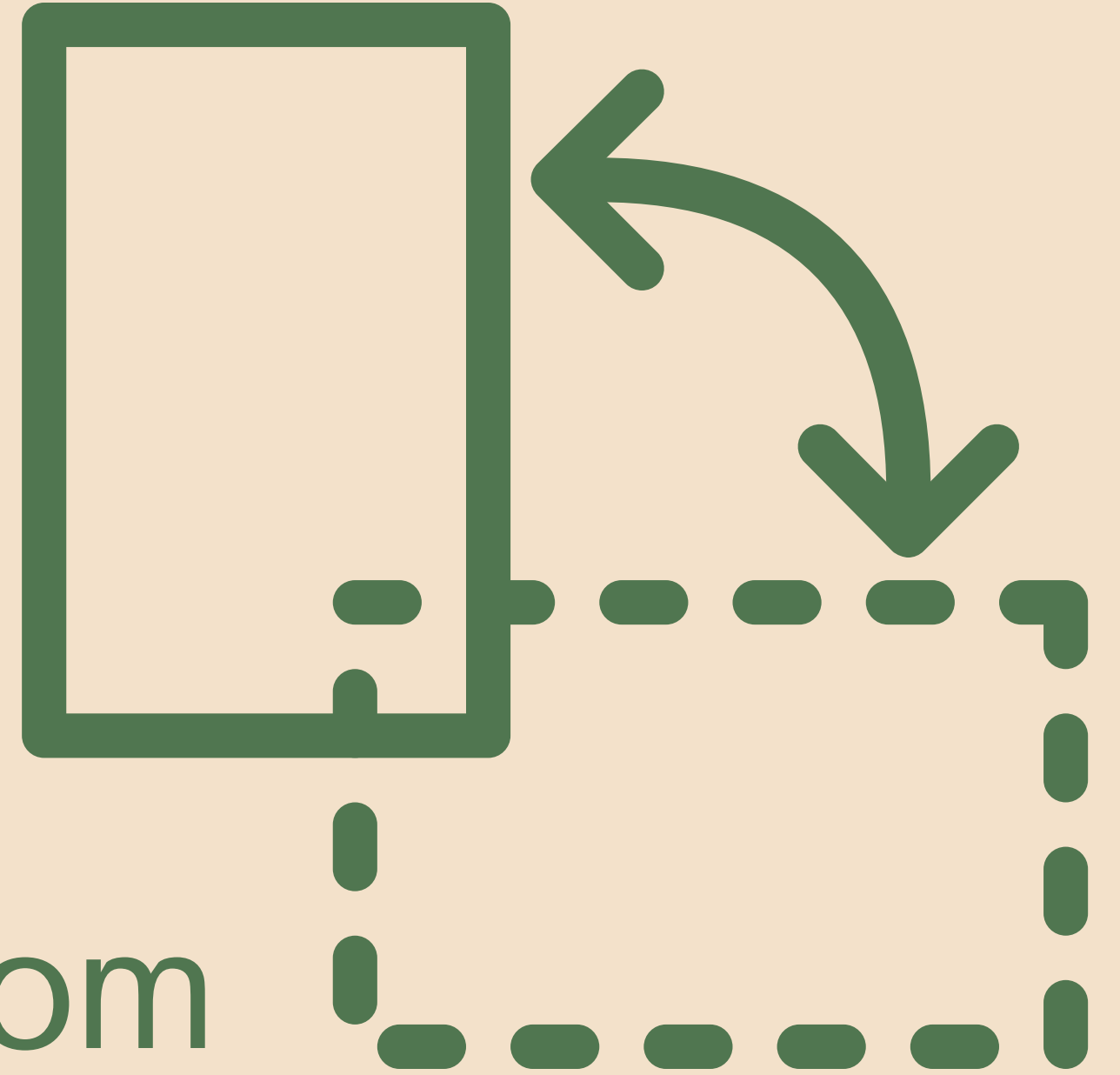
Click on the "Participants" icon.



Click on "Yes - No" icons to vote.

# Maximize your view

If you're viewing from a mobile device, rotating from **vertical** to **horizontal** view will enlarge this presentation.





Questions?



# The Team

HKIT



Y.A. studio



GLS



Building



the

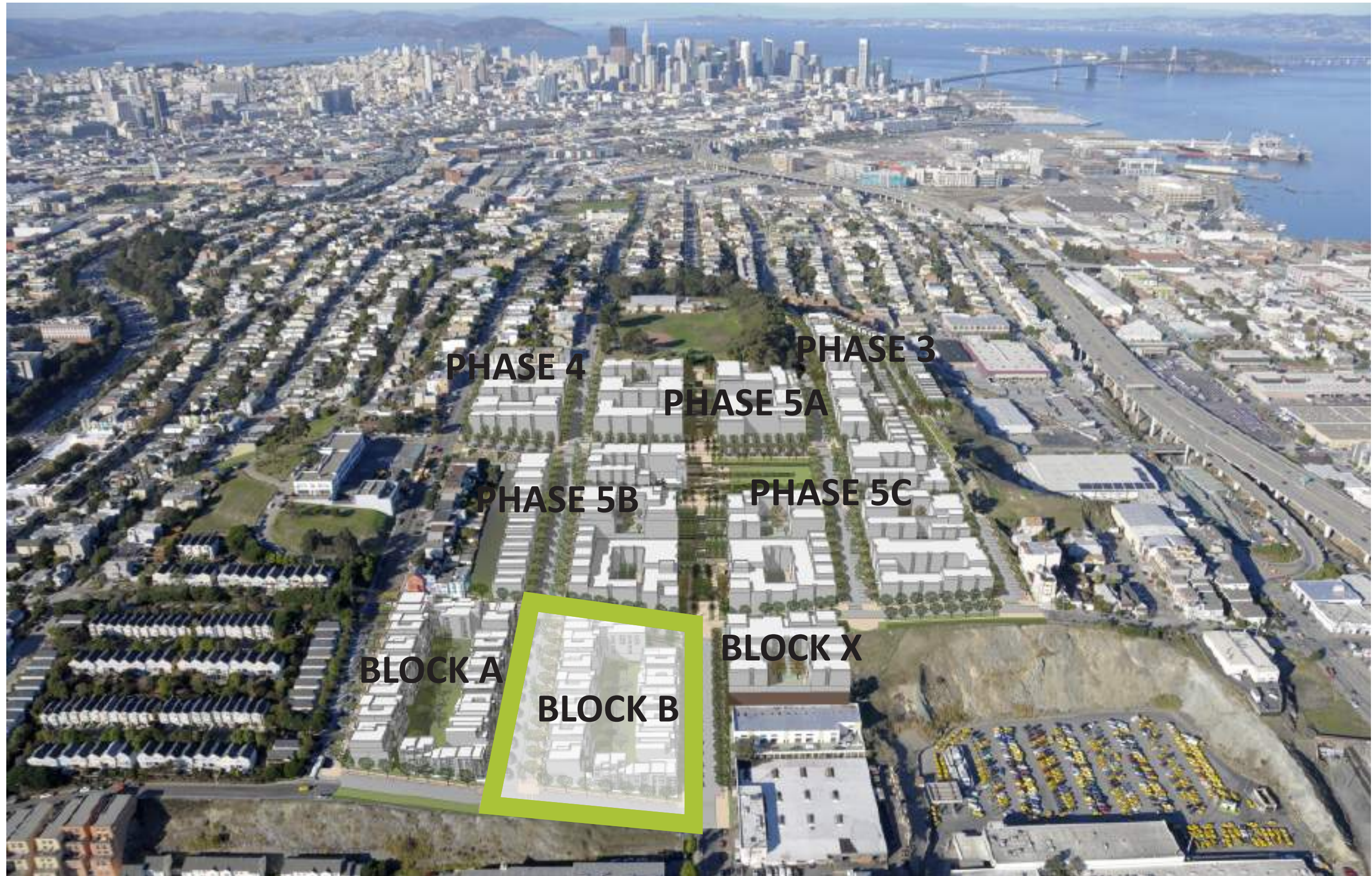


Neighborhood





# Proposed Neighborhood





# Previous Community Meetings

• June 2020 & June 2017	Resident Comments + <b>Response</b>
<ul style="list-style-type: none"><li>• Shared project updates<ul style="list-style-type: none"><li>• Building height and density</li><li>• Unit size and layouts</li><li>• Parking</li><li>• Childcare center</li><li>• Open Spaces</li></ul></li></ul>	<ul style="list-style-type: none"><li>• Mini Park: for all ages, slides, swings, play structures, informal play areas, fitness area<ul style="list-style-type: none"><li><b>Re-design can incorporate</b></li><li><b>Asking for additional input</b></li></ul></li><li>• Other resident, community &amp; pet amenities<ul style="list-style-type: none"><li><b>Asking for input today</b></li></ul></li><li>• Public art that reflects history, cultural heritage &amp; identity</li></ul>

# Current Block B Site Plan



- 157 total units
- 2 buildings
- All elevator access
- Flats
- 77 indoor parking spaces
- 45 on-street parking spaces
- Child care (50 children)





**BUILDING B**



**BUILDING A**

# Building Lobbies





**POTRERO HISTORY INSPIRED ART**



**LOCAL ARTIST ART MURALS**

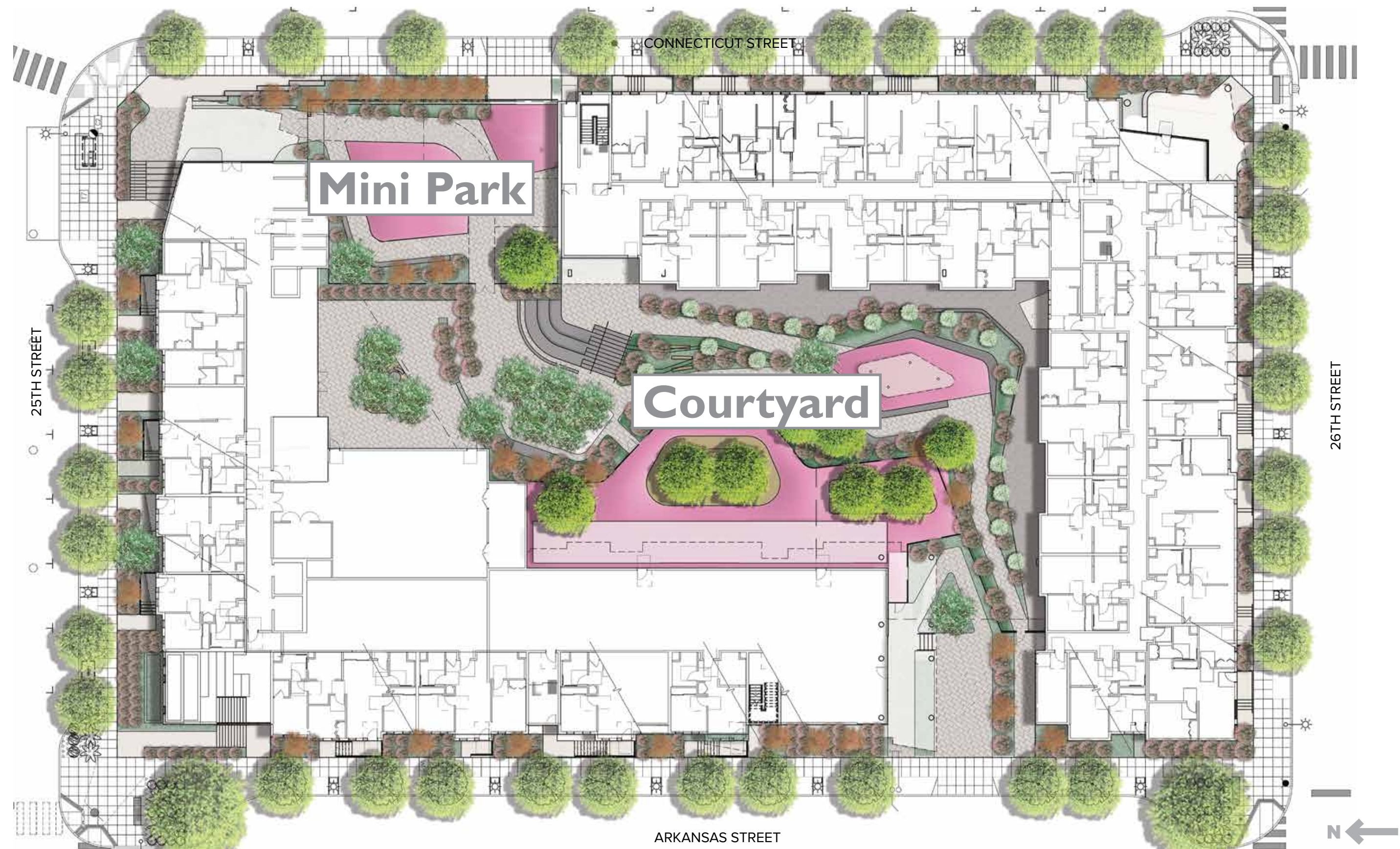


**STAINED CONCRETE INSTALLATIONS**

## Public Art Ideas



# Open Space





# Open Space



**Children's play**



**BBQ Area**



**Community garden**



**Tot lot**



**Outdoor seating**



**Areas of sun and shade**



# Mini Park





# Mini Park Play Equipment: Central Play Structure



Potrero Block X





# Mini Park Play Equipment: Secondary Play Structure



Hunter's View, San Francisco, CA





# Mini Park Play Equipment: Additional Play Pieces





# Mini Park Play Equipment: Additional Play Pieces



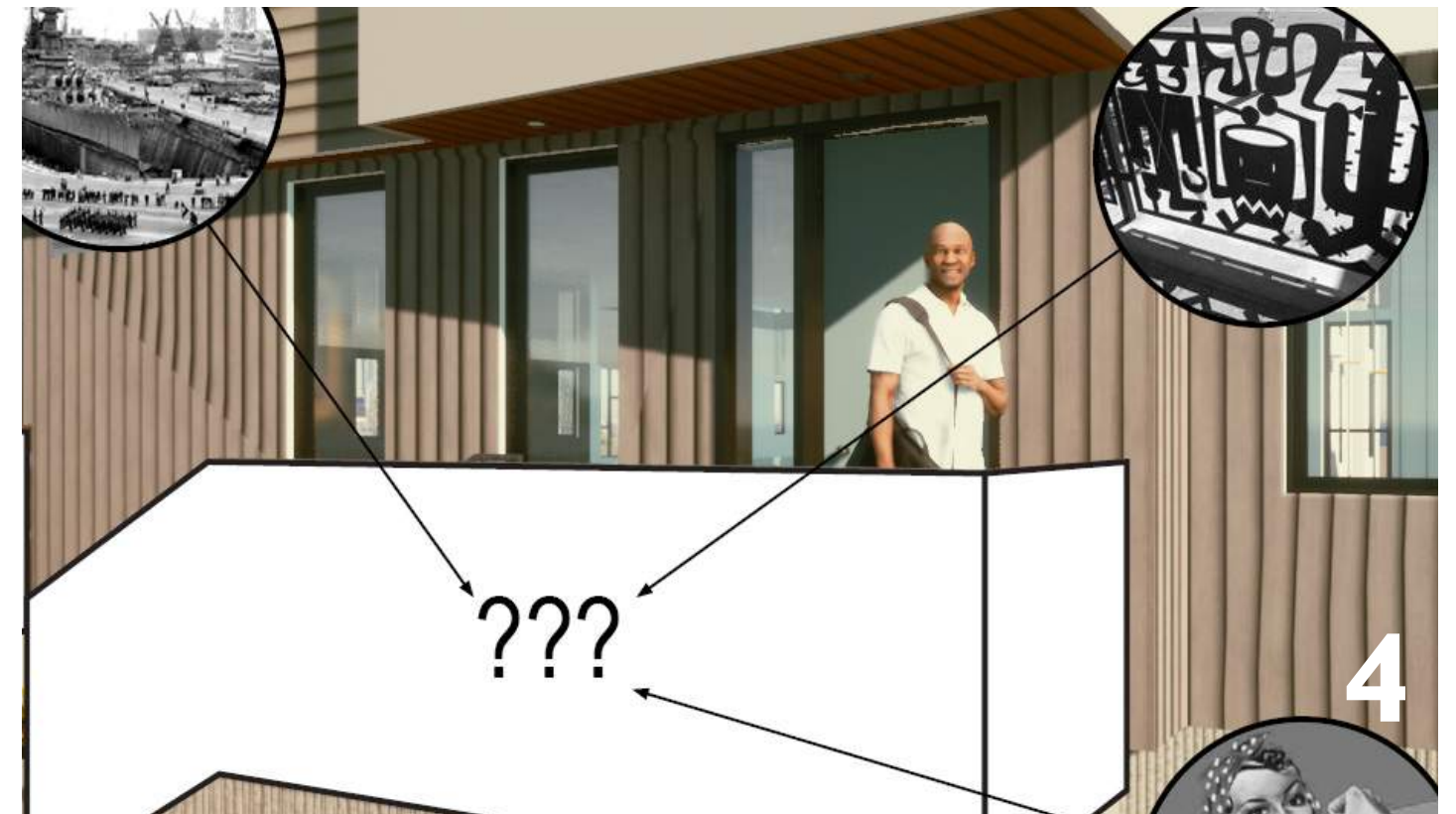


# View Along Arkansas Street





# Exterior Design Ideas: Unit Stoops + Fencing





# Vertical Pickets I





# Standard Pattern 2



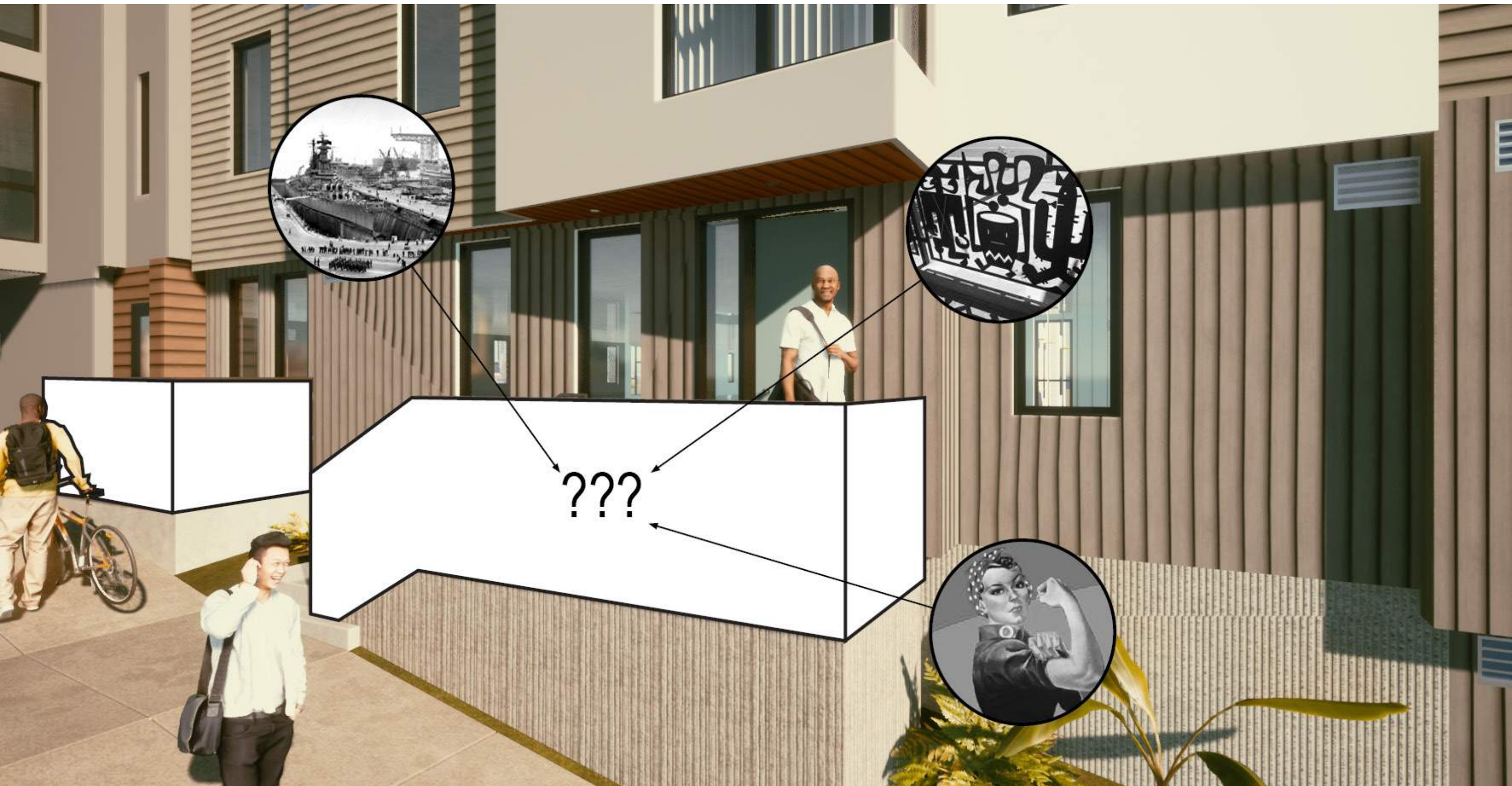


# Standard Pattern 3





# Custom Pattern 4





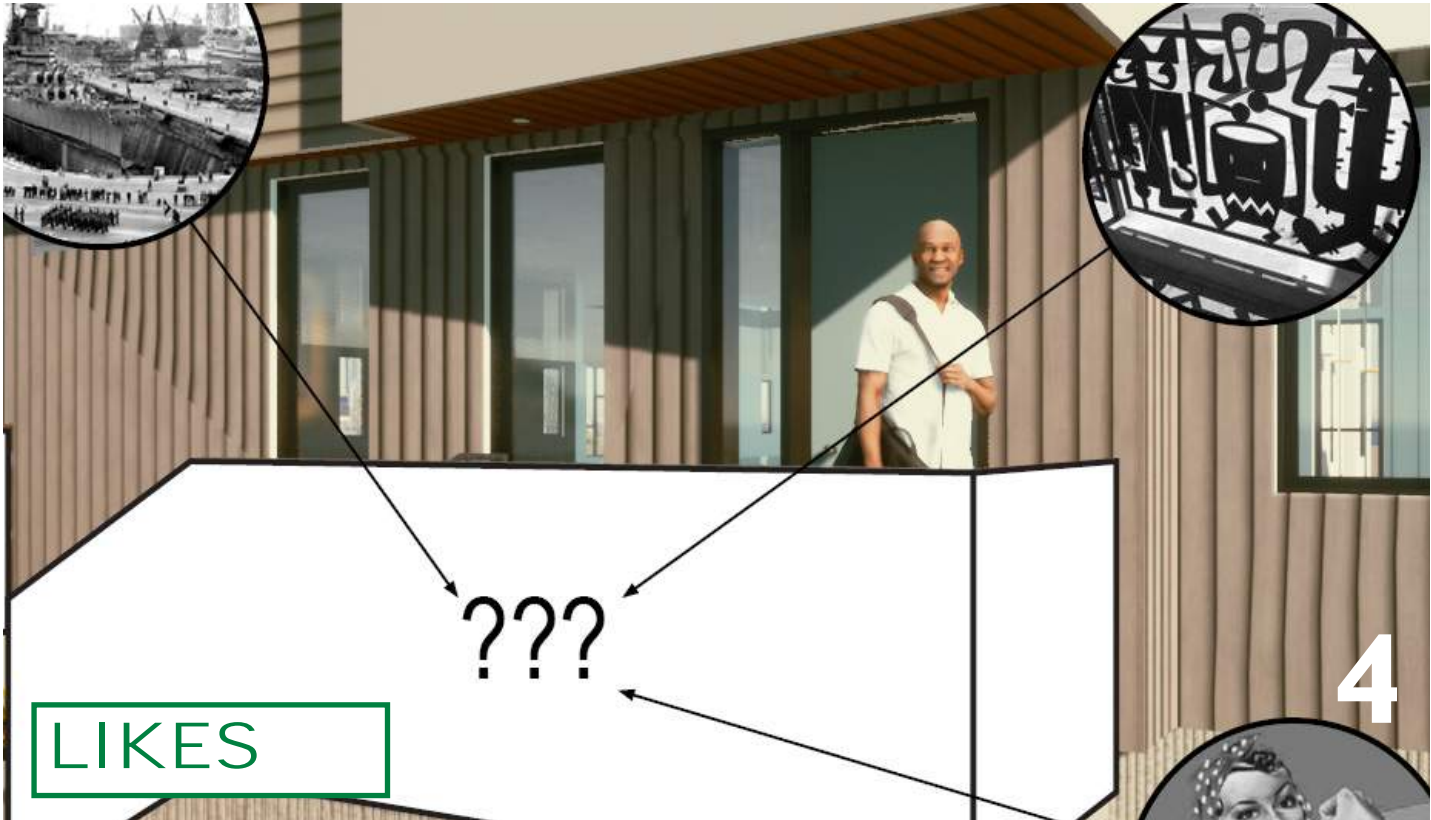
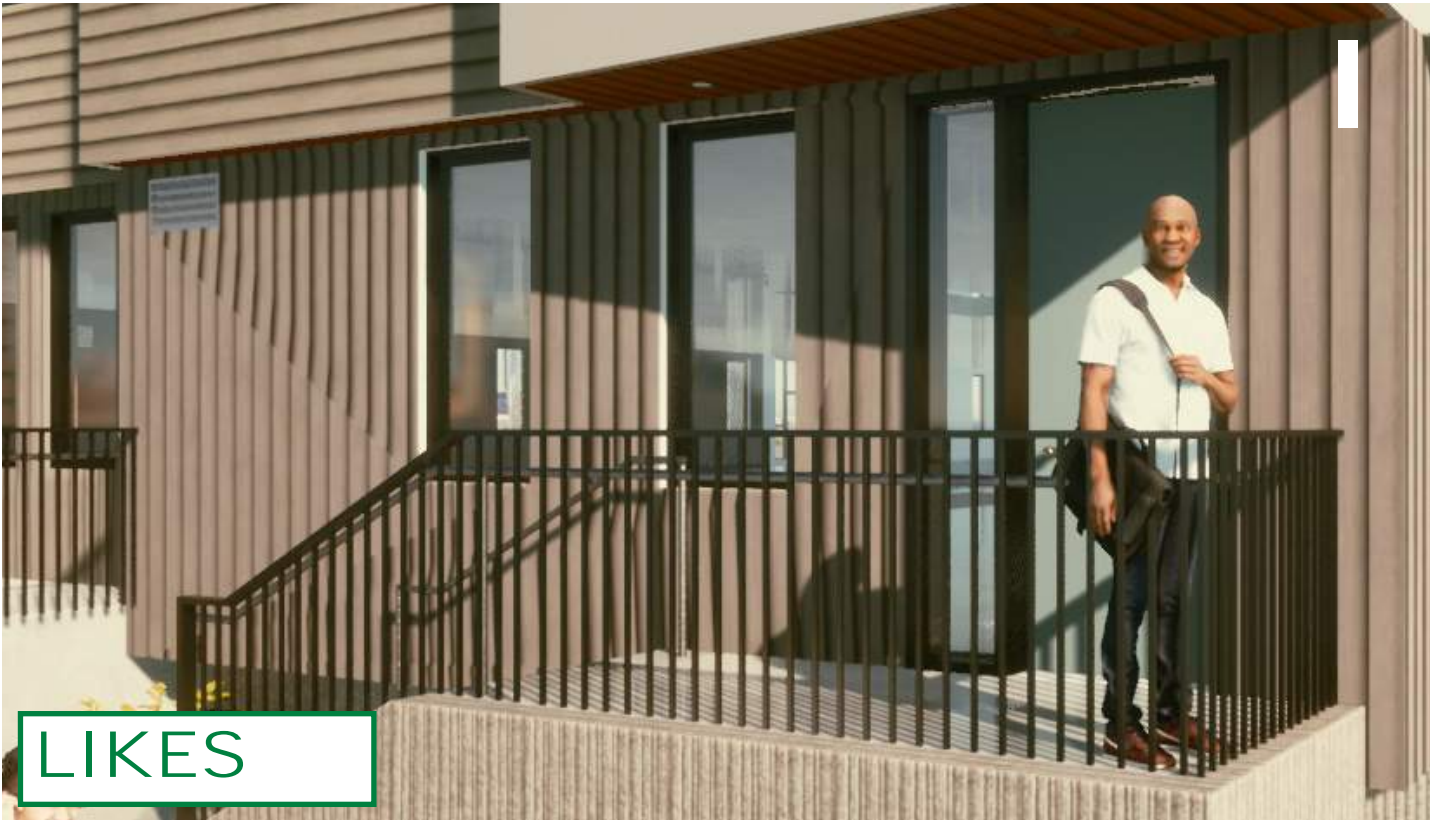
# Metal Fence Precedents



**Mission Playground, San Francisco**



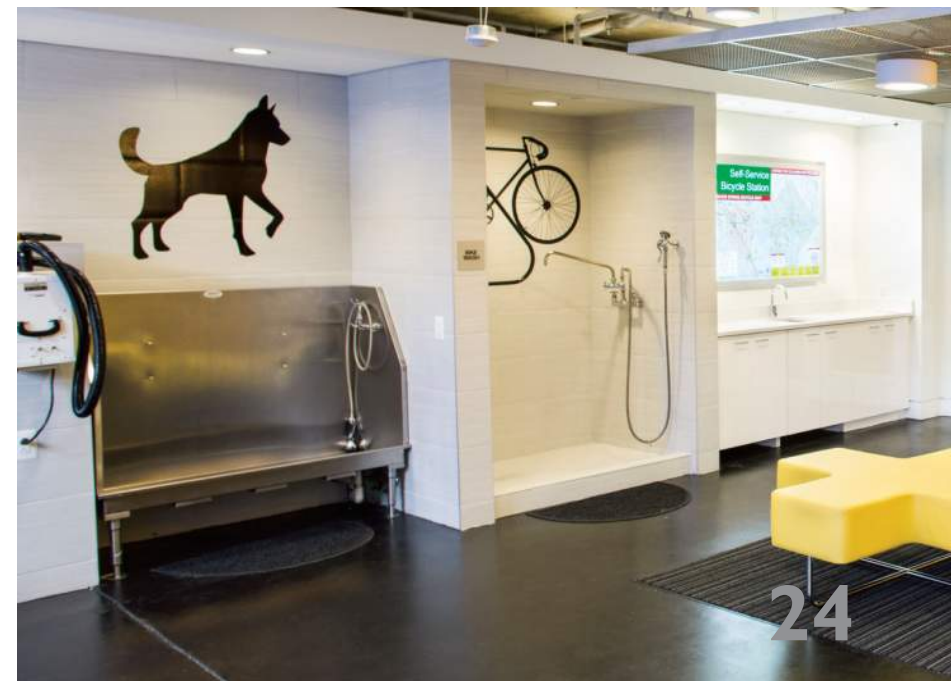
# Exterior Design Ideas: Unit Stoops + Fencing





# Flex Spaces

- Learning Center
- Library
- Media Room
- Fitness Room
- Game Room
- Craft Room
- Dog Wash





# Flex Space: Learning Center



STUDENT DESKS  
& CHAIRS

WHITEBOARDS &  
TACK SURFACES



STORAGE  
SOLUTIONS

MODULAR  
FURNITURE

SHARED TABLES



# Flex Space: Library



CHILDREN'S  
TABLES

LOW  
BOOKSHELVES



BANQUET  
SEATING

WORK  
STATIONS



# Flex Space: Media Room



LARGE SCREEN

LOUNGE SEATING



GROUP SEATING

MULTIPLE TV DISPLAYS



# Flex Space: Fitness Room



TRX



BALLET BARRES

YOGA  
EQUIPMENT

MIRRORS



# Flex Space: Game Room



PLAYFUL ART

BANQUET SEATING



FUN STORAGE SOLUTIONS

COMMUNAL TABLES



# Flex Space: Craft Room



TV FOR DEMOS

PEG BOARD  
WALLS



AMPLE STORAGE

FLEXIBLE  
SEATING



# Flex Space: Pet Amenities: Dog Wash



VACCUUM  
STATION

SHOWER  
STATION

SEATING



GROOMING  
STATIONS



# Flex Spaces

- Learning Center
- Library
- Media Room
- Fitness Room
- Game Room
- Craft Room
- Dog Wash



# Q & A

Please type in the chat or raise your hand



# Next Steps

BRIDGE will send out online and/or hardcopy surveys to gather input from residents who were unable to attend today

**September 2020:** Follow-Up/Rebuild Potrero Meeting

**November 2020:** Phase 2 Infrastructure Work Starts

**May 2021:** Block B Vertical Construction Start



**www.RebuildPotrero.com**



**facebook.com/PotreroIsHome**



**@PotreroIsHome**



**Opt-in for Mailed Materials**  
**To be added to the Mailing List, contact:**

**TJ Brice**

**415.635.7728**

**tbrice@bridgehousing.com**



**For more information, contact:**

**April Talley**

**415.321.3566 x3566**

**atalley@bridgehousing.com**