

R E B U I L D
P O T R E R O

**BRIDGE**Housing

Potrero Block B Community Meeting

September 24, 2020

Agenda

- **Welcome & Virtual Protocol**
- **Team Introductions**
- **Update on Building Interiors + Exterior**
- **Update on Open Spaces**

Group Agreements

- **Contribute to meeting goals**
- **Let everyone participate**
- **Listen with an open mind & heart**
- **Tackle the problem, not the person**
- **One mic**

The Team

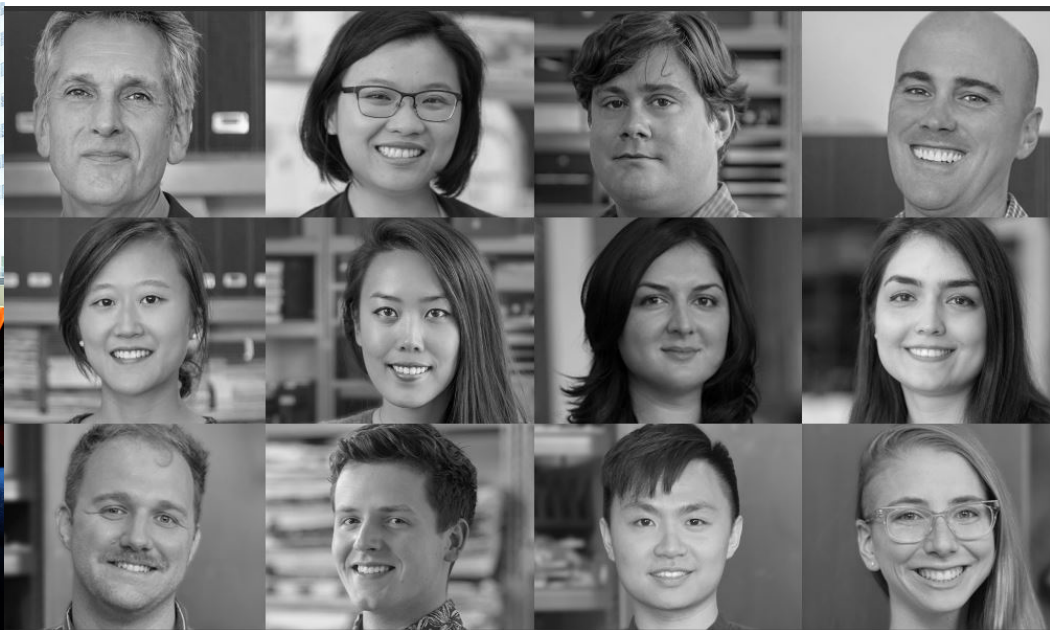
HKIT



Y.A. studio



GLS



Building



the



Neighborhood



Proposed Neighborhood



Previous Community Meetings

- **Surveys and Meetings in August 2020, June 2020 & June 2017**
- **Shared project updates**
 - **Building height and density**
 - **Unit size and layouts**
 - **Parking**
 - **Childcare center**
 - **Open Spaces**
- **Discussed and received feedback on:**
 - **Open Spaces**
 - **Unit Stoops**
 - **Flex Spaces**

Current Block B Site Plan



- 157 total units
- All elevator access
- Flats
- 77 indoor parking spaces
- 45 street parking spaces
- Child care (50 children)

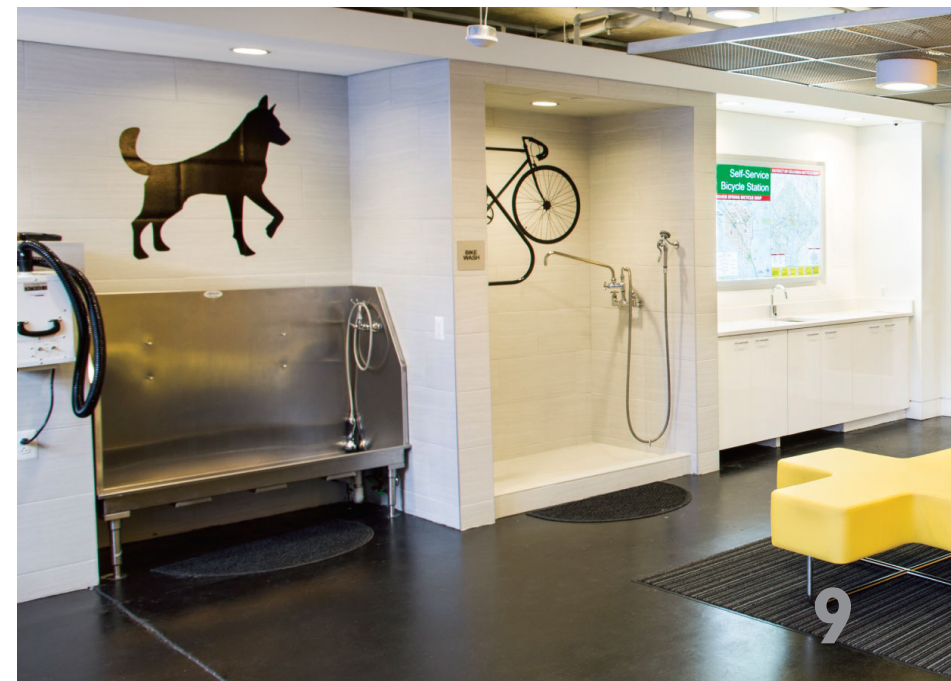
Common Areas + Amenities

- Main Community Room
- Teen Room
- Laundry Room on Every Floor
- Courtyard Features, including BBQ
- Fitness Room
- Second Community Room
- Learning Center + Library
- Dog Wash



Flex Spaces

- Fitness Room - 86%
- Learning Center - 79%
- Library - 50%
- Game Room - 50%
- Craft Room - 46%
- Dog Wash - 39%
- Media Room - 39%



Flex Space Comments from August 2020

- Combine game and craft rooms to make it multi-purpose
- **We should have more than one fitness area.**
- We need large spaces for mixing groups.
- Media room could be like a community room (multi-purpose).
- **Really important to have a learning space, especially due to COVID.**

Flex Space: Fitness Room in Building A



TRX

MIRRORS

BALLET BARRES

YOGA
EQUIPMENT

Flex Space: Learning Center + Library in Building B



WHITE-
BOARDS
& TACK
SURFACES

MODULAR
FURNITURE

STUDENT
DESKS &
CHAIRS

STORAGE
SOLUTIONS

Flex Space: Multi-Purpose Community Room in Building B



KITCHENETTE

LOUNGE
FURNITURE

FLEXIBLE
PARTITIONS

FITNESS SPACE

Flex Space: Dog Wash at Courtyard in Building B



GROOMING
STATIONS

PET TUB

ROLL-IN
SHOWER

SINK &
COUNTER

Building Lobbies



BUILDING B



BUILDING A

Typical Resident Corridors



LIGHTING

ACCENT
COLORS

FLOOR
PATTERNS

Unit Mix

	# of Units	%
1 Bedroom	40	25%
2 Bedroom	54	34%
3 Bedroom	52	33%
4 Bedroom	11	7%
Total	157	

Unit Design



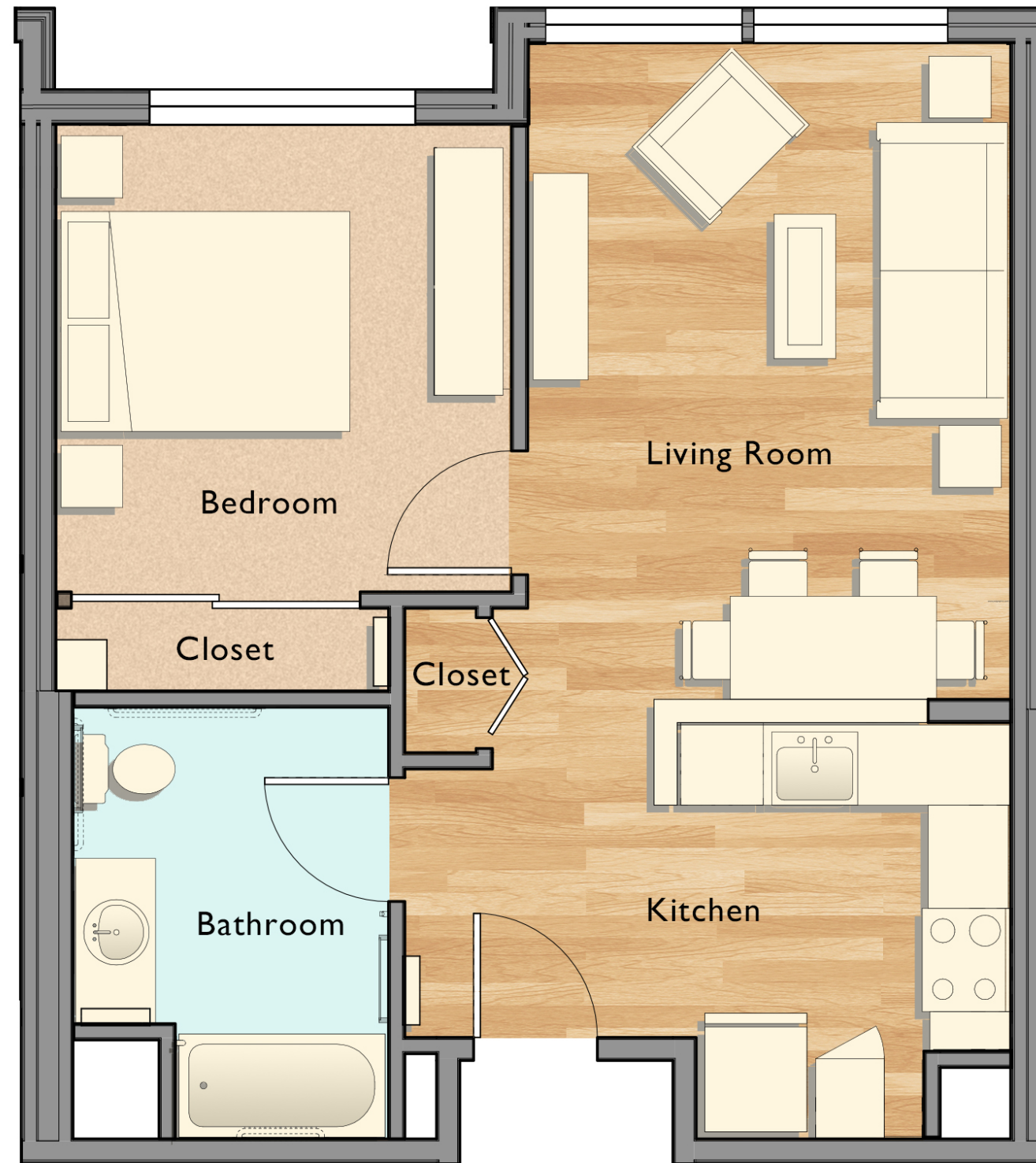
1101 Connecticut: Living and Kitchen



1101 Connecticut: Bathroom

I Bedroom Unit

Average 660 SF / 30% Increase from Existing Units



2 Bedroom Unit

Average 946 SF / 31% Increase from Existing Units



3 Bedroom Unit

Average 1,250 SF / 29% Increase from Existing Units



4 Bedroom Unit

Average 1,547 SF / 32% Increase from Existing Units



View from Unit



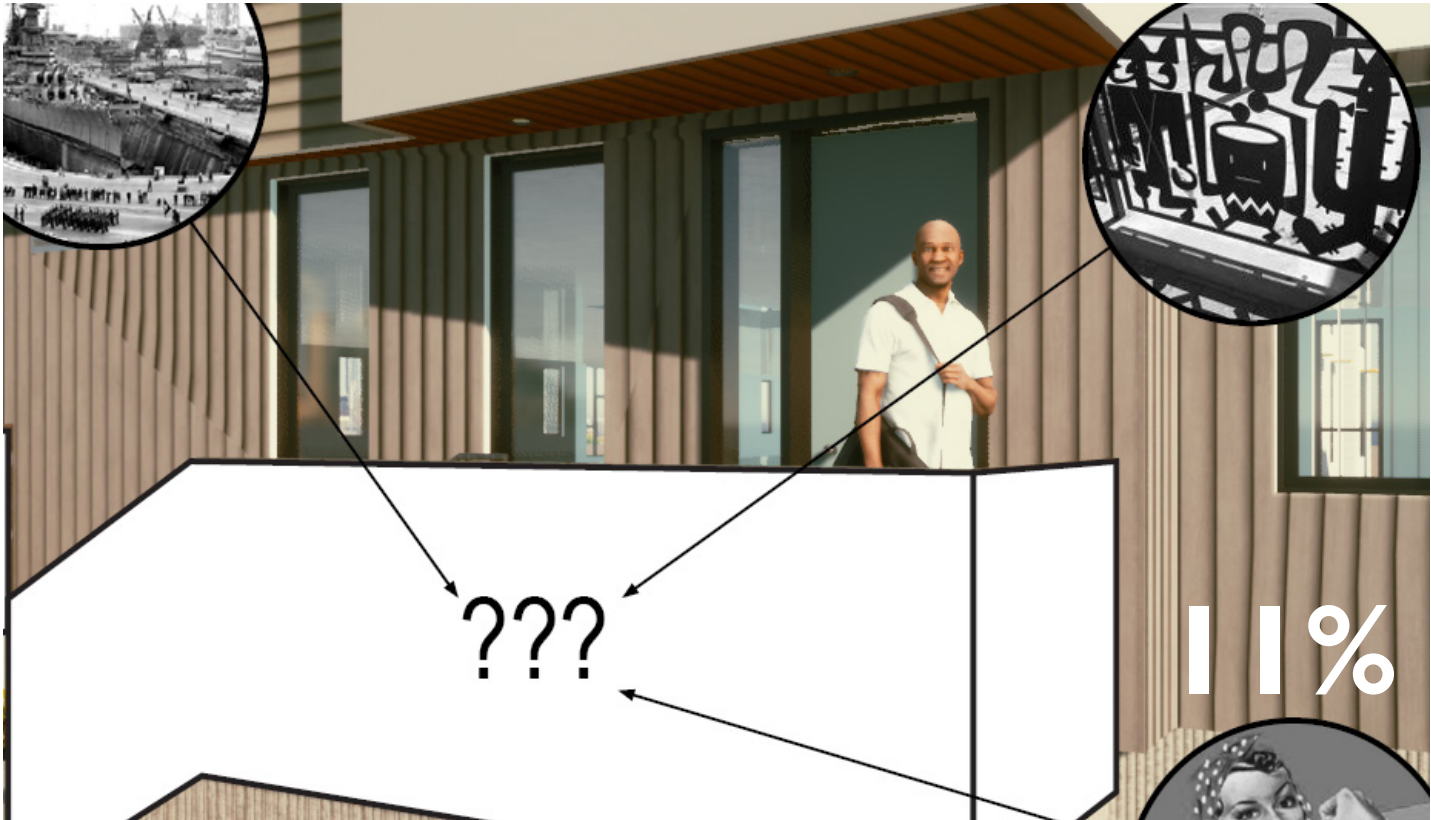
View of Main Entry



View Along Arkansas Street



Exterior Design Ideas: Unit Stoops + Fencing



Standard Pattern 2



CURRENT COURTYARD DESIGN

Connecticut Street

25th Street

26th Street

Arkansas Street



OPEN SPACE: GOALS



Children's play



BBQ Area



Community garden



Tot lot



Outdoor seating



Areas of sun and shade

CURRENT COURTYARD DESIGN

Connecticut Street



COMMUNITY TERRACE



**COMMUNITY ROOM OPENS TO
SHADED WOOD DECK AND PATIO**

AMPHITHEATER & PATIO



AMPHITHEATER WITH GATHERING SPACE AT ENTRY OF BUILDING B

TOT LOT & BBQ AREA



**PLAY AREA FOR YOUNG CHILDREN
NEXT TO BBQ AND SEATING AREA**

MINI PARK PLAYGROUND



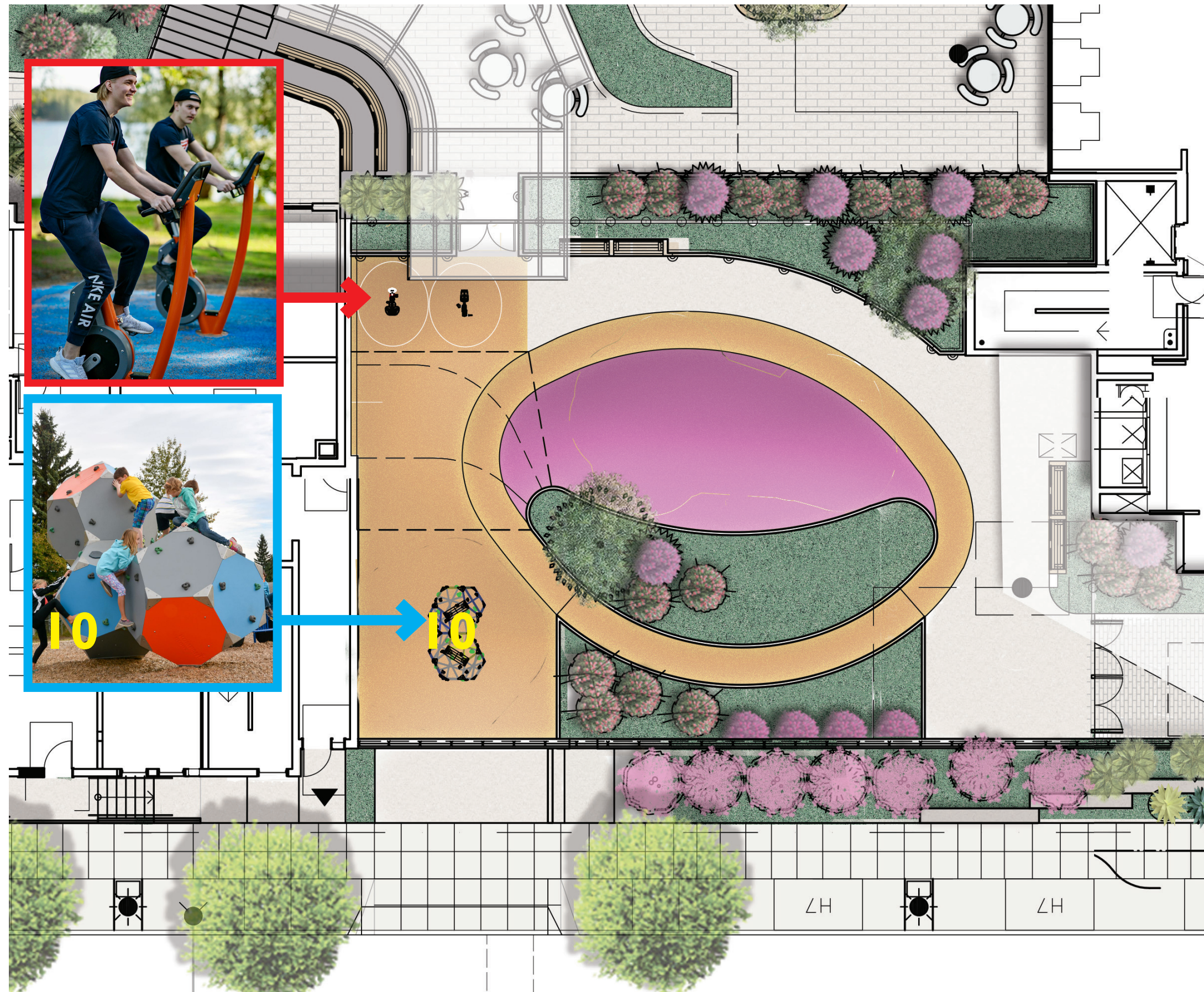
PLAY STRUCTURES AND GREEN SPACE
FOR OLDER CHILDREN AT MINI PARK

COMMENTS FROM AUGUST 2020

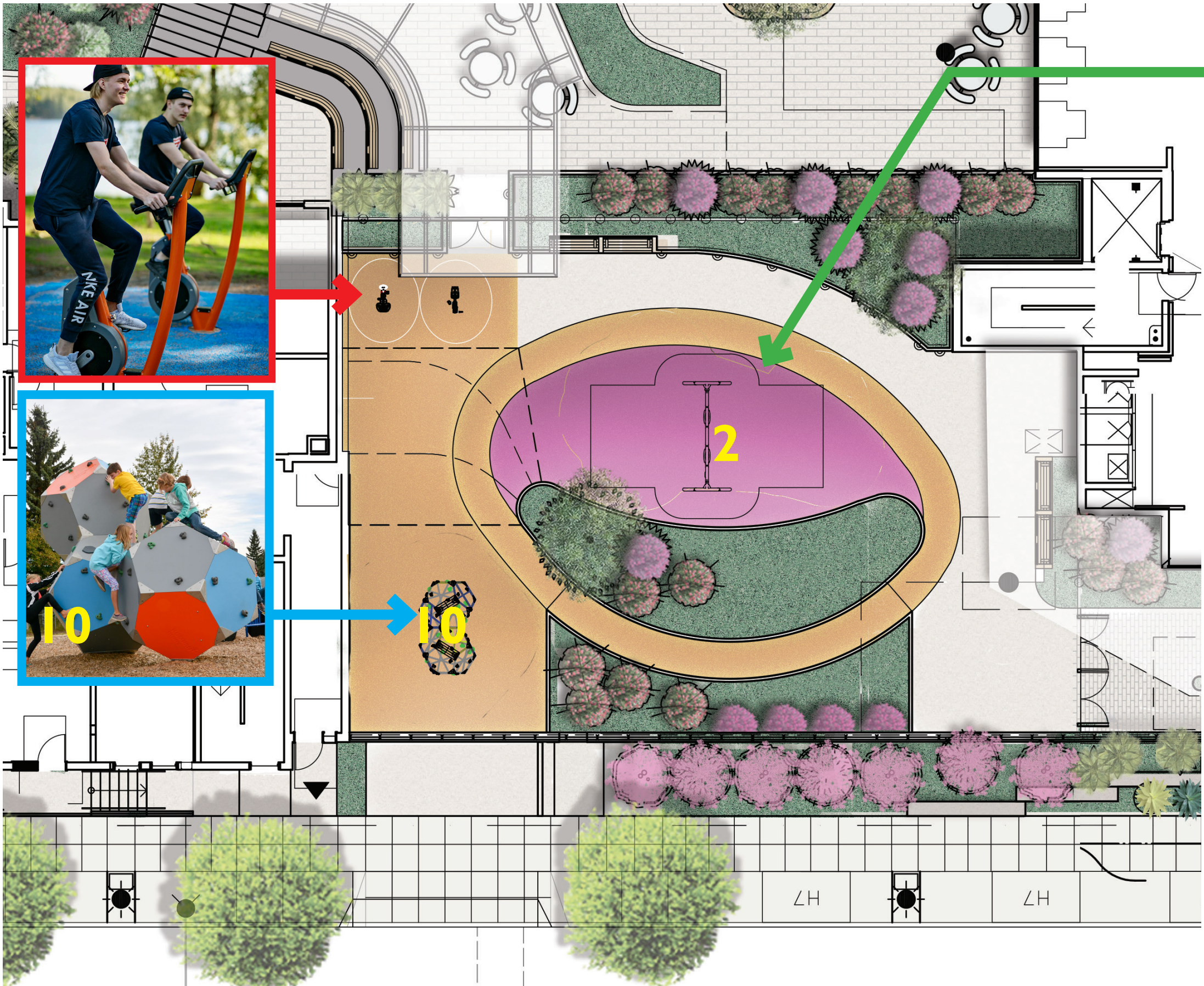
- Can swings be added?
- **Prefer larger play structure that could appeal to older children**
- How many kids can play on this at the same time?
- **Children need all these 4 elements, so they'll have the capacity to explore all parts of their being.**



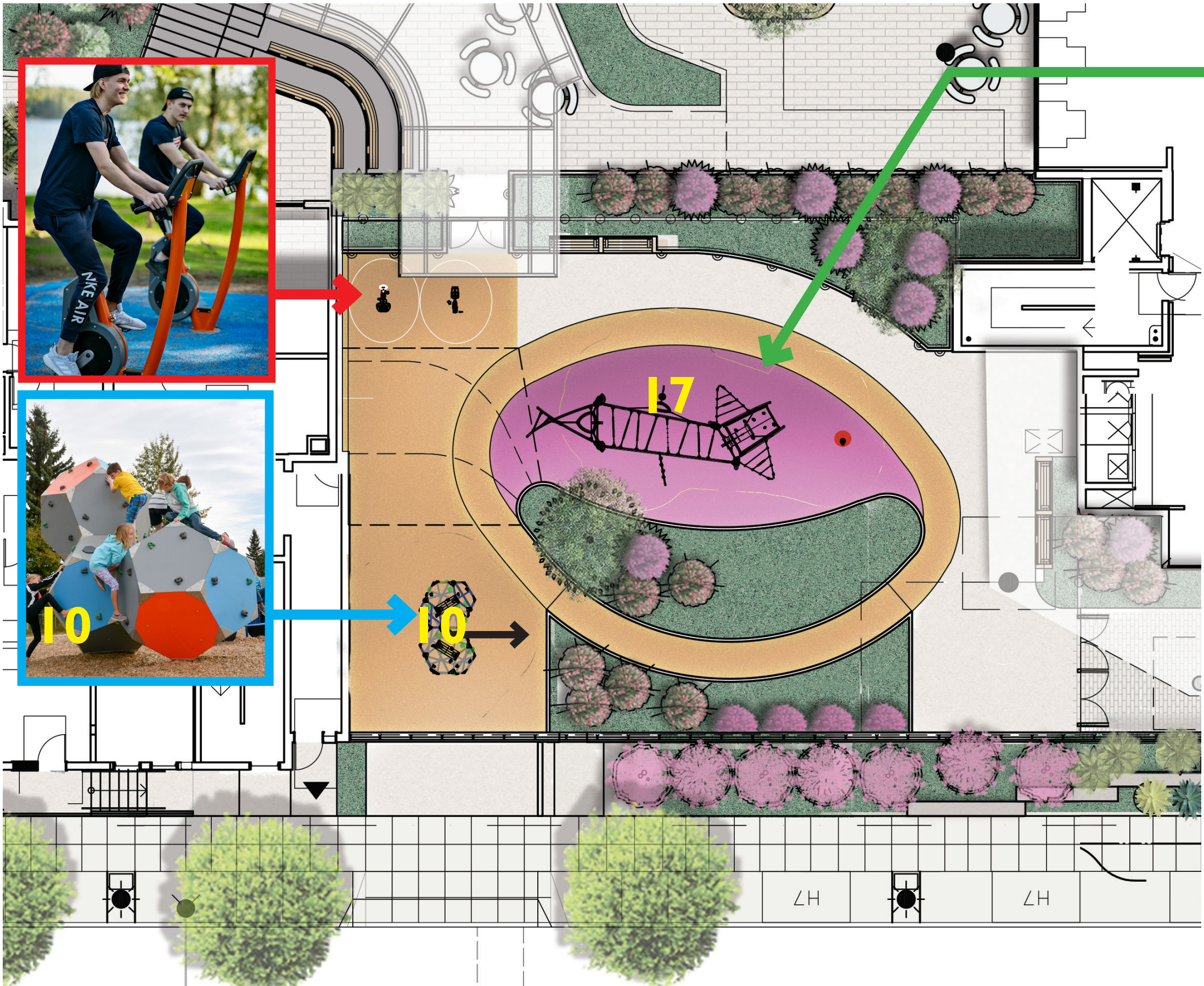
MINI PARK PLAYGROUND DESIGN



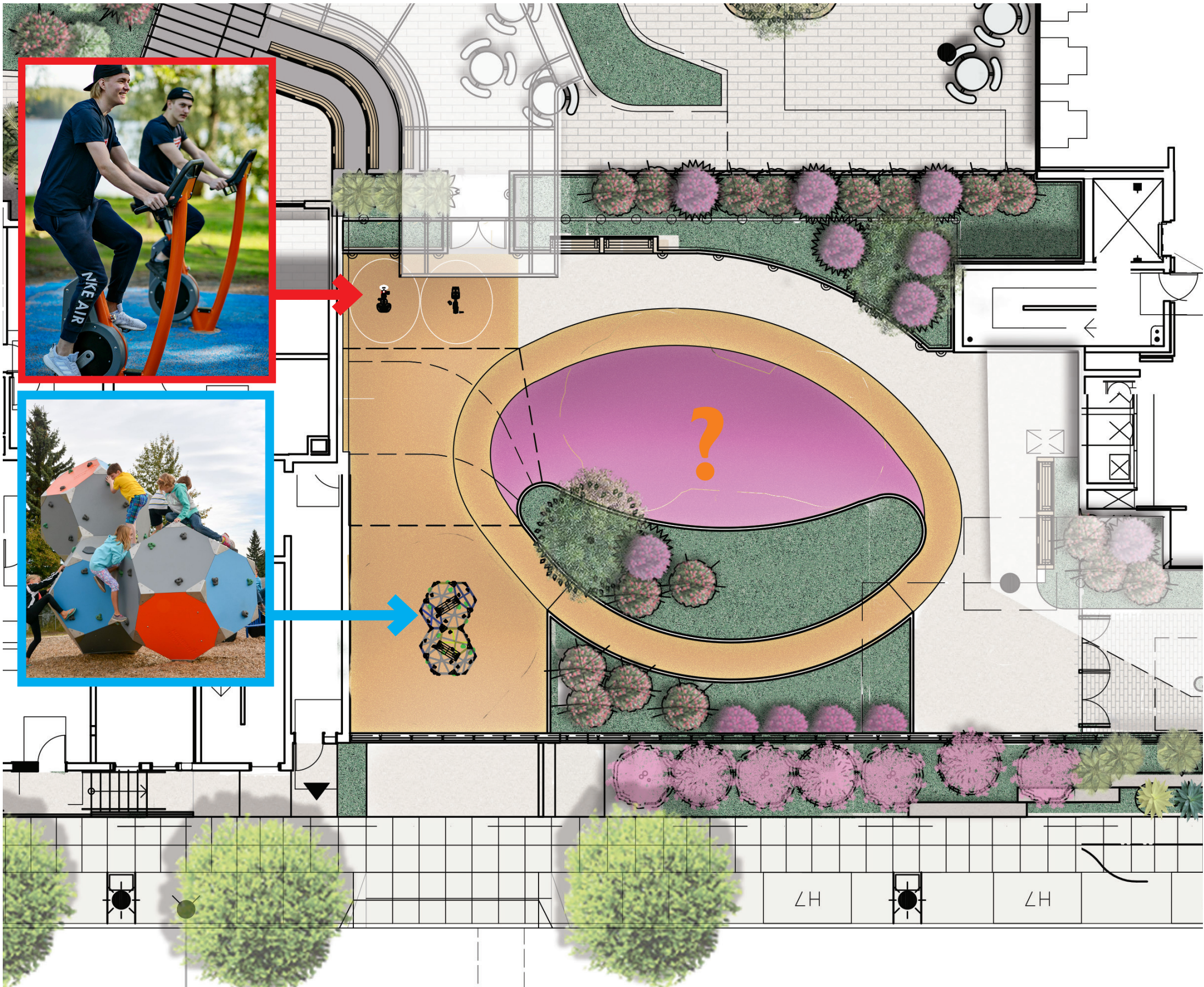
MINI PARK PLAYGROUND DESIGN



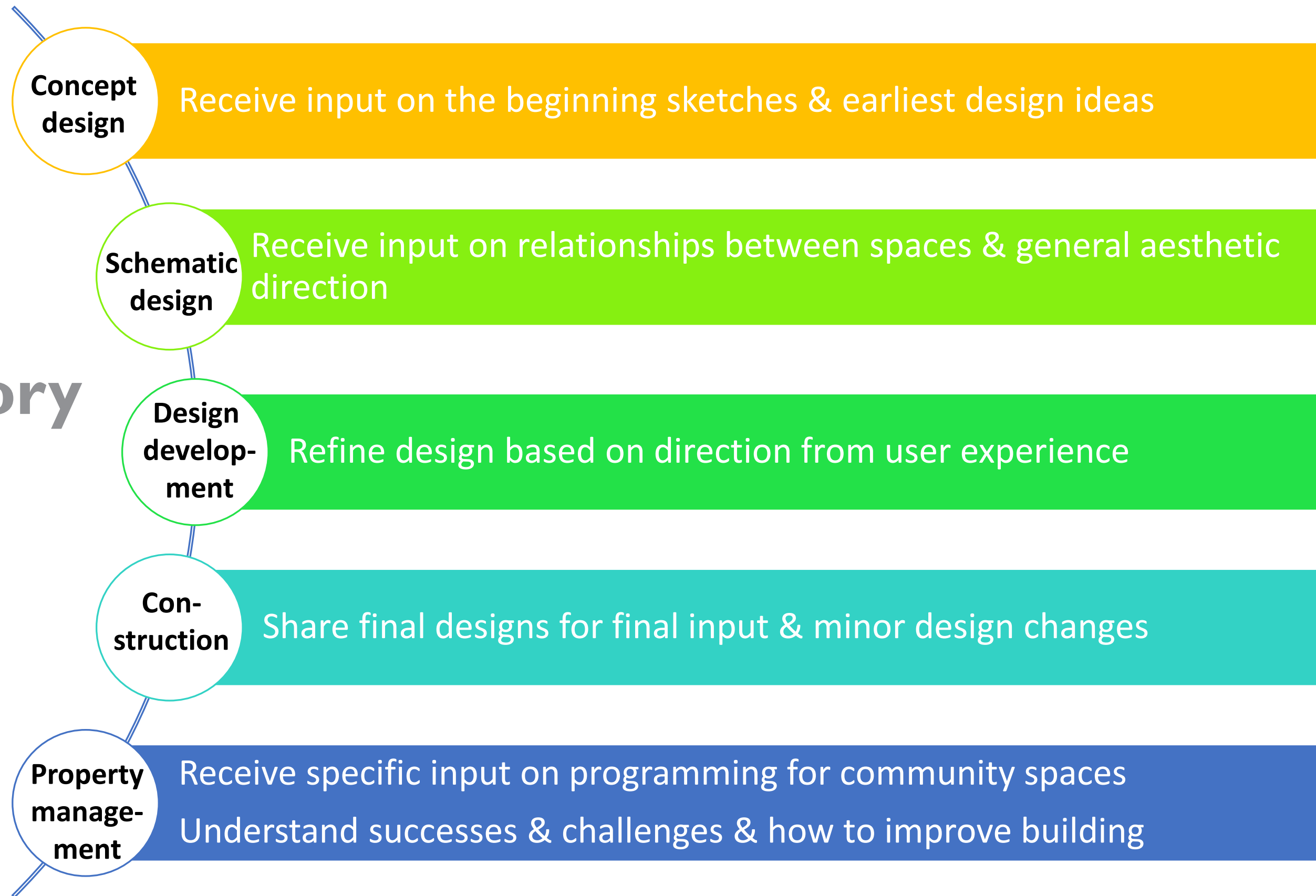
MINI PARK PLAYGROUND DESIGN



MINI PARK PLAYGROUND DESIGN



Participatory Design Process



Next Steps

Nov/Dec 2020:	Phase 2 Infrastructure Work Starts
Summer 2021:	Block B Vertical Construction Start
2023:	Block B Construction Complete

www.RebuildPotrero.com



facebook.com/PotreroIsHome



@PotreroIsHome

Stay Informed

To receive info via mail, email, or text,
please complete this online form,
[https://www.surveymonkey.com/r/
NPV7FKS](https://www.surveymonkey.com/r/NPV7FKS).

Or contact TJ Brice at 415.635.7728 or
tbrice@bridgehousing.com.

For more information, contact:

April Talley

415.321.3566 x3566

atalley@bridgehousing.com

Q & A

Please type in the chat or raise your hand



**If you need Zoom assistance, call or text 415.321.4046.
Si requiere ayuda con el Zoom, llame o envíe un texto
al 415.321.4046**